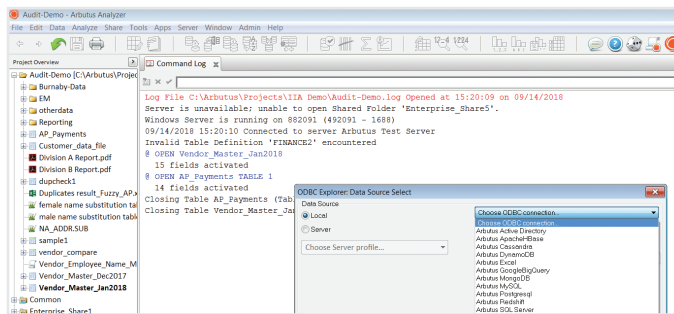


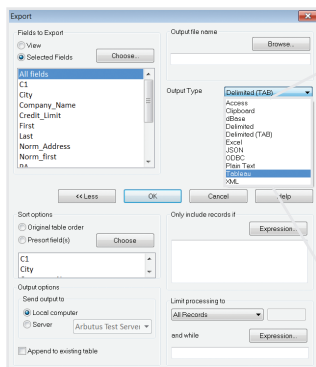
WHAT'S NEW IN ARBUTUS VERSION 6.2

Arbutus V.6.2 – Over 50 new or improved features that make it easier to access, analyze, and search for data, automate & schedule procedures, export results, notify stakeholders, and manage your licensing

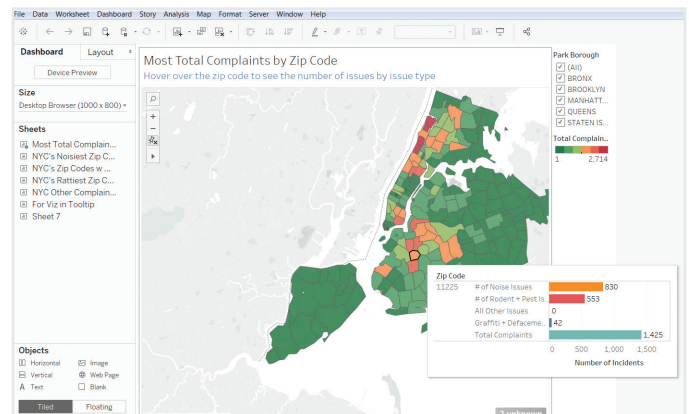


ArbutusConnect

A suite of new data connectors that support the most common data sources our customers work with (Active Directory, Excel, MySQL, SQL Server, etc.)



Access
Clipboard
dBase
Delimited
Delimited (TAB)
Excel
JSON
ODBC
Plain Text
Tableau
XML



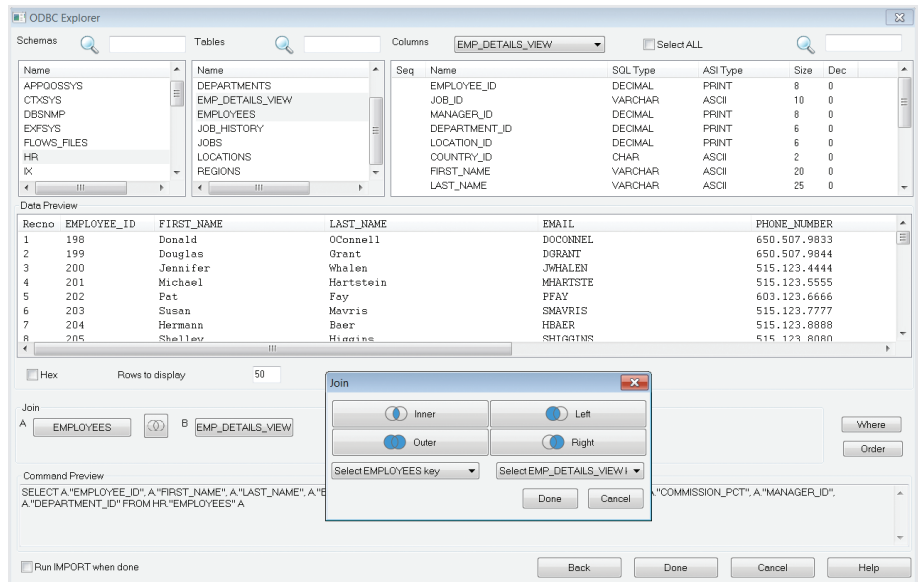
Speed time to visualization

Export directly to Tableau using the Tableau TDE format

Arbutus ODBC Explorer

Preview and format your data prior to downloading with this full-featured interactive app – query and join any ODBC/SQL data

- » No need for table definition,
- » Ability to select any combination of tables,
- » Join multiple tables,
- » Preview result in a window,
- » Specify filtering on Sort criteria,
- » View data in hex, for problem situations,
- » Automatically create appropriate command syntax when satisfied.

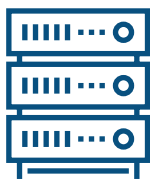


The screenshot shows the Arbutus QuickStats interface. It displays a table with columns: Vendor, Description, Invoice Date, Vendor ID, Amount, and Invoice Number. The table contains 15 rows of data. A summary row is highlighted at the bottom, showing: Total: 32,626.12, Average: 4,660.87, Count: 7.

Vendor	Description	Invoice Date	Vendor ID	Amount	Invoice Number
likatessen	Queso Cabrales	07/08/2015	11666	10223.65	2508987
ses	Singaporean Hokkien Fried Mee	01/29/2015	13049	2800.20	955/242
	Mozzarella di Giovanni	06/18/2015	11057	825384.36	1570063
cial	Moctezu Tofu	10/26/2015	11244	20227.10	8049018
	Manjimp Dried Apples	03/03/2015	11951	6694.97	9861887
no	Taqueria Jack's New England Clam Chowder	04/16/2015	11059	2271.21	8747244
ces	Manjimp Dried Apples	08/19/2015	12074	427.87	4940267
rmercados	Louisiana Fiery Hot Pepper Sauce	12/18/2015	10609	2909.98	1077844
ox	Gusta's Knäckebröd	03/31/2015	10869	39.52	5329320
rmercados	Ravioli Angelo	04/05/2015	11738	55.47	9885077
likatessen	Louisiana Fiery Hot Pepper Sauce	01/05/2015	10006	-42.20	8502859
tico	Ltda. Sir Rodney's Marmalade	10/02/2015	10847	17468.14	7566511
y Store	Geitost	04/11/2015	10399	2765.36	360806
ier	Camembert Pierrot	02/20/2015	12682	33663.18	4080648
lfil				Total: 32,626.12	Average: 4,660.87 Count: 7

Arbutus QuickStats

See the total, average, and count on the status line by simply highlighting a range of cells in your view



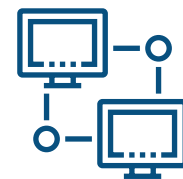
Arbutus Server

Improved data security – can be configured to prevent storage locally



Arbutus SmartApps

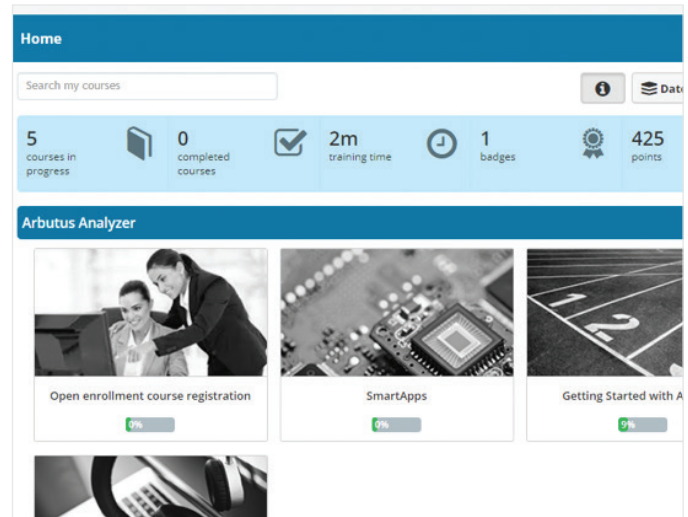
Access to over 60 SmartApps automatically as part of the install. Additions, improvements and online training content via ArbutusLearning



Expanded Fuzzy Matching

Improve audit findings with meaningful fuzzy matches – added functionality for Dice's Coefficient

Alongside the Arbutus V.6.2 (beta) release, Arbutus is excited to launch **ArbutusLearning** – our new online learning portal. Get up to speed quickly and work at your own pace or refresh your Arbutus skillsets if you haven't been to training in a while. Access to **ArbutusLearning** will be made available to all of our supported customers and current subscribers at no additional charge.



WHAT'S NEW IN VERSION 6.2?

EXCEL RELATED

- + Improved formatting so datetime fields display in Excel better when exported from Analyzer
- + Added a progress dialog when exporting to Excel XLSX
- + Fixed a bug where exporting to a file with multiple sheets updated the formatting on ALL sheets

SERVER

- + Added support to restrict files from being moved from the server
- + Server profile dialog now can have 2 servers to connect with (i.e. internal and external IP)
- + ODBC source data is automatically compressed when flattened

SCHEDULING

- + Server Profile information is now only written once for each unique user scheduling jobs, easing Password maintenance
- + Server Profile information for each unique user gets updated automatically with password updates
- + Added support for users with security rights to edit/delete scheduled jobs submitted by others
- + Added support to kill orphaned scheduled jobs on the server

MANAGING ACTIVATIONS

- + Added support so users can see all of the activations for their key/code
- + Added support so users can delete activations from within Analyzer

PROCEDURES/SCRIPTING

- + Added support to DIALOG command to allow chosen table to be immediately opened/used
- + Added support to select multiple items from a project item dropdown
- + Added support for using macros with variable arrays from project items
- + Added support for allowing nested macros

DATA DEFINITION WIZARD

- + Added several new connectors to allow for easier data access to common data sources
- + Added support to read HTTPS web URLs
- + Added speed search for ODBC fields
- + Added a check box to check for available space when flattening data from ODBC
- + Server-based ODBC tables now default to flatten the data (Just like local ODBC does)

OVERVIEW

- + Added support to update the local project folder contents via F5 or right-click
- + Added a right-click "Open as Secondary" for tables
- + Performing a block delete from the expanded Overview will immediately update the Overview

COMMANDS

- + Improved NOTIFY so it will work with SSL and all email protocols
- + Improved the RELATION command so related tables can be shared across different regions/languages
- + Improved CROSTAB so it now supports row and column totals as well as drilldown
- + Added support for OPEN to now have an additional PASSWORD parameter

FUNCTIONS

- + Added SIZE to tell how many items are in a variable array
- + Added DICECOEFFICIENT
- + Changed EOMONTH to return only the data found in the source data (no time component returned now if the source data was just a date)

SAP

- + SmartLink can now read tables of any width without needing to create a new RFC
- + SmartLink now compresses data imported from SAP
- + SmartLink can now join tables
- + SmartLink can now process in background mode
- + SmartLink automatically retrieves background jobs when processing is complete
- + SmartLink can now filter on time fields

MISCELLANEOUS

- + ArbutusLearning – new Online Learning Portal
- + Improved how Workspaces are added and edited
- + Improved the ACL Project Converter
- + Preview data from ODBC sources without the need for a table definition
- + Added a warning message when the project is already in use
- + Added SmartApps automatically as part of the install
- + Added Back and Next arrow buttons to the button bar that allows tables to be re-opened based on the order in which they were opened
- + Added an editable area to enter an alternate code page value in Table Options tab or Edit Table Layout
- + Added the count, total and average for highlighted numeric “cells” in the view
- + Command dialog appears on the primary screen for those with multiple monitors

Contact us to learn how Arbutus can help you realize your vision for audit analytics and controls monitoring.



ARBUTUS ANALYTICS

Arbutus delivers the very best in purpose-built audit analytics technology to meet the exacting demands of today's business environment. Auditors, business analysts, and fraud investigators rely on Arbutus to enhance their testing, analysis and compliance capabilities.

Toll free: 877.333.6336

Phone: 604.437.7873

Fax: 604.437.7872

SALES INQUIRIES

info@ArbutusSoftware.com

TECHNICAL SUPPORT

support@ArbutusSoftware.com

 **ARBUTUS**
Drive Your Analytics