



**What's New in
Pentana Vision
1.6**

What's New in Pentana Vision 1.6

Introduction

This document outlines the main new functionality delivered in Pentana Vision 1.6, available from July 2012. Enhancements in this release include:

- Offline Working
 - Check out all or selected parts of an Audit for performance offline
- Formatting features
 - Hyperlinks
 - Cross-references
 - Other formatting features
- Analysis screens
 - Audit Reports repository
 - Analyse Steps
 - Analyse Findings

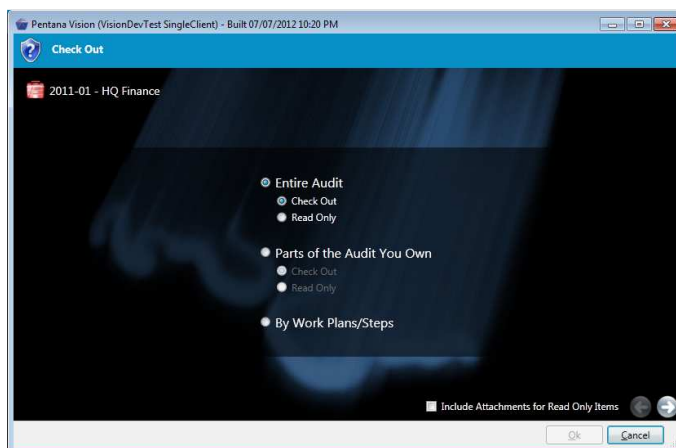
Offline Working

Pentana Vision 1.6 introduces the ability for users to 'check out' parts or all of an audit to their local PC, work offline and subsequently check in their changes to the server.

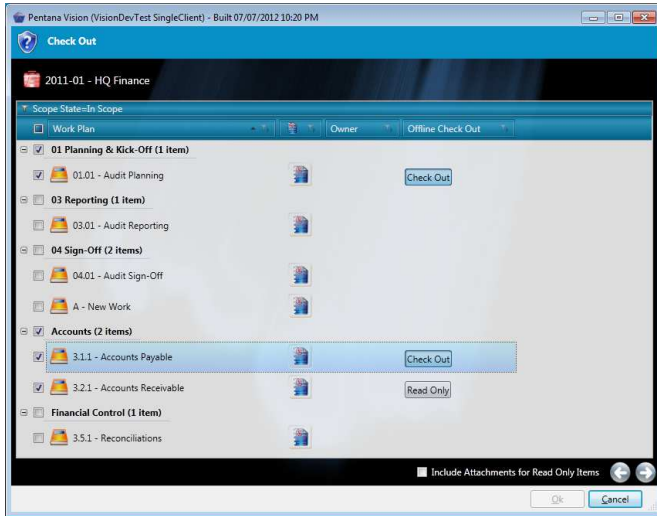
To check-out an Audit for offline working, users navigate to it within the Audits screen or launch into it and then, at the Audit Details screen, select 'Check Out' from the 'Offline Working' ribbon:



The user may decide whether to check out the entire audit, just the parts of the audit where he/she has been assigned as the 'Owner' or to select individual Work Plans and Steps.



When selecting by Work Plans/Steps, the user may select whole Work Plans or individual Steps to check out, and get read-only copies of other Work Plans/Steps.



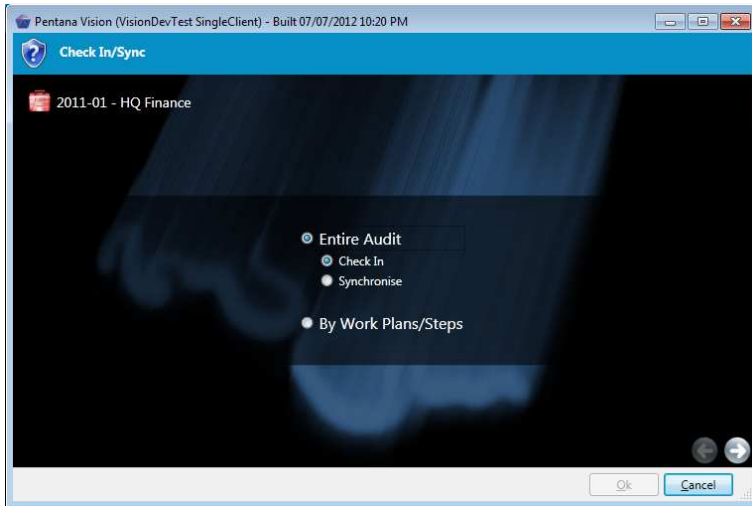
Checked-out items automatically become read-only to other users, thereby avoiding any risk of conflicts. Where multiple people are working on the same Audit then they can each check out the parts of the Audit that are assigned to them.

Once a user has checked out an Audit, the next time that they log into Pentana Vision they are prompted to log into the Server or Local instance of the database:



The user logs into the 'Local' database when working offline and makes changes as normal.

When ready to post changes back to the main database, the user logs into the 'Server' database, navigates to the Audit and selects 'Check In/Sync' from the Offline Working ribbon. Users may choose to check in or synchronise the entire Audit or selectively check in by Work Plans/Steps.



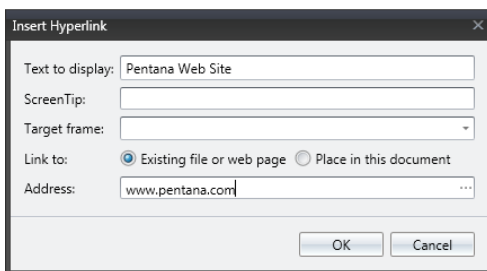
Check-in will upload changes and remove the local copy, while 'Synchronise' will upload changes but keep the item(s) checked out and refresh other data.

An 'Undo Check-out' option is available for when a user wishes to cancel their checked out changes, while an 'Admin Undo Check-out' allows an administrator user to cancel someone else's check-out in cases of emergency, such as when a user's PC is lost or stolen.

Formatting features

Hyperlinks

Pentana Vision 1.6 adds the ability to capture hyperlinks in all large (Rich Text) fields throughout the application. Users may type in a URL directly or right-click and choose 'Hyperlink' to add a new link:



Each Hyperlink is shown in blue and underlined, and clicking Ctrl + Click will activate the link:

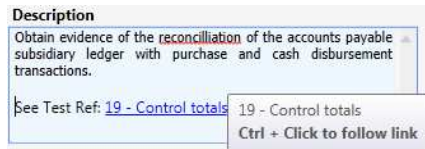


Cross-references

In Pentana Vision 1.6, special hyperlinks can also be added in order to cross-refer between items both within the Pentana Vision database and from File Attachments back to items within the Pentana Vision database.

These cross-references operate between Pentana Vision items at both Entity and Audit Levels, and even across Audits. Link can be set between different item types such as Tests, Risks, Controls and Findings and Actions, and also from MS Word and Excel documents back to Pentana Vision items.

To add a cross-reference, users navigate to the target item and select 'Copy' from the right-click menus. Then they navigate back to the source item, click into any editable Rich Text field, right-click and choose Paste to add the cross-reference:

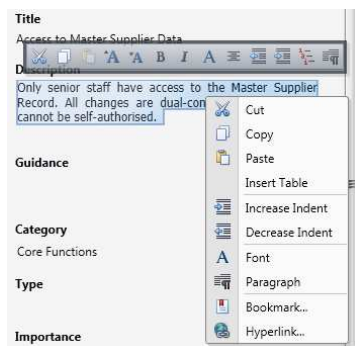


Selecting Ctrl + Click on one of these special hyperlinks will launch the appropriate Entity/Audit and screen within Pentana Vision and navigate the user automatically to the cross-referenced item.

Other formatting features

In addition to hyperlinks, Pentana Vision 1.6 supports more formatting features directly within the application, such as numbered lists and creation of tables. These could previously be copied and pasted in from MS Word (say) but can now be added directly within Pentana Vision.

In order to deliver this functionality, Pentana Vision 1.6 utilises a different user interface component. Formatting commands are now accessed from a hover toolbar and right-click menu within the relevant input box and not from the main ribbon.



Analysis screens

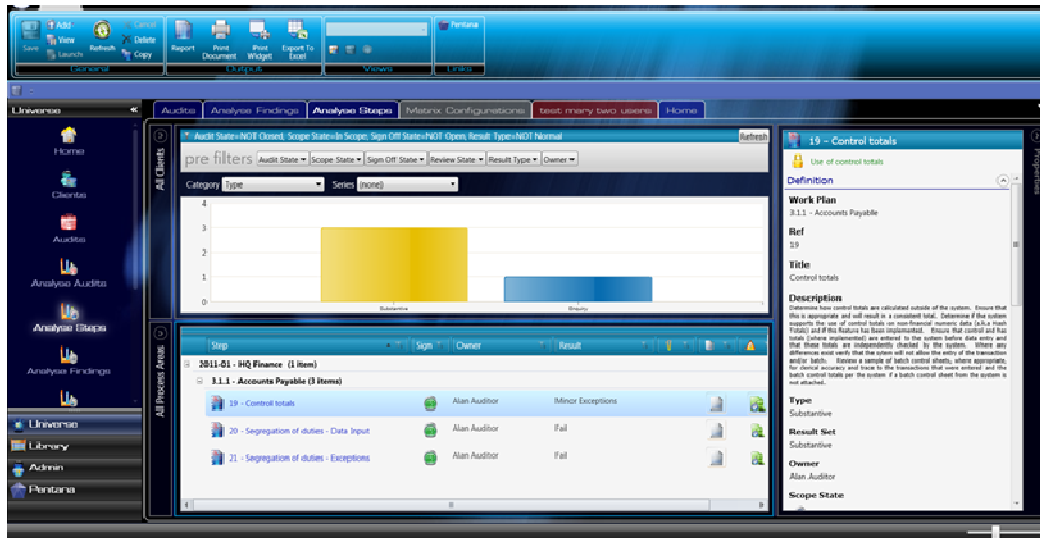
Audit Reports repository

Pentana Vision 1.6 includes a new 'Audit Reports' screen at the Universe level. This screen brings together all of the Audit Reports produced across the universe, so that they can be easily located and launched independently of the originating audit. The Audit Reports screen can be filtered in several ways, to interrogate the repository according to different criteria.

Analyse Steps

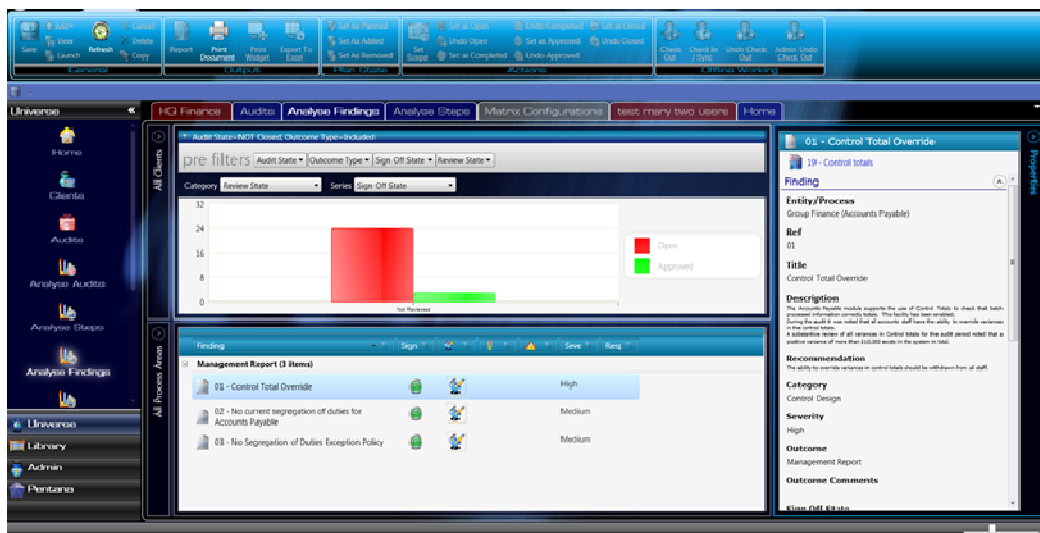
Pentana Vision 1.6 includes a new 'Analyse Steps' analysis screen. This provides a dynamic and graphical summary of Steps/Tests based on the user's category and series selections. Features are

comparable to the existing 'Analyse Actions' module, including pre-filters and drill-through into the detail.



Analyse Findings

Pentana Vision 1.6 includes a new 'Analyse Findings' analysis screen. This provides a dynamic and graphical summary of findings based on the user's category and series selections. Features are comparable to the existing 'Analyse Actions' module, including pre-filters and drill-through into the detail.



Other enhancements

Other enhancements in Pentana Vision 1.6 include:







- The Risk and Control Matrix rules can now be configured directly within the application.

Note: Special care is needed when setting up new matrix configurations; switching to a new matrix configuration will cause Library, Entity and open Audit assessments to be cleared and they will require reassessment.



- The 'Export to Excel' option now supports export of Rich Text fields.
- The 'Print Widget' option now includes an optional Report Header, when specified as part of a saved View.

Sample Risk and Control View Report Header

Objective	Risk Template	Assesur	Category	Type	Active State
Accounts Payable (13 Items)					
Pay Legitimate Suppliers					
Pay Legitimate Suppliers	 Fake Invoices - Employees		Accounts Payable	New One	
Pay Legitimate Suppliers	 Fake Invoices - Suppliers		Accounts Payable		

Further Information

We hope this has given you a good insight into the new capabilities of *Pentana Vision*. If you have any further questions or would like to book a full demonstration please contact your local reseller or email info@pentana.com. We look forward to hearing from you.